

# Radial Split Between Bearing Pump



# DHB



## ● Applications

- 석유정제용 Petroleum Refinery
- 석유화학용 Petrochemical Industry
- 기타화학용 Other Chemical
- 고온/고압용 High Temperature /Pressure Services

## ● Feature

- ☑ 중심 지지 구조의 견고한 디자인  
Centerline supported and heavy duty design
- ☑ 고효율 제품  
High efficiency
- ☑ 다른 응용 프로그램에 대해 완전한 표준화  
Completely standardization for wide application
- ☑ API 610 최신버전 요구 가능  
API610 Latest edition is available on request
- ☑ API standard 610 적용 (API Code : BB2)  
API standard 610 (API Code : BB2)

## ● Ratings

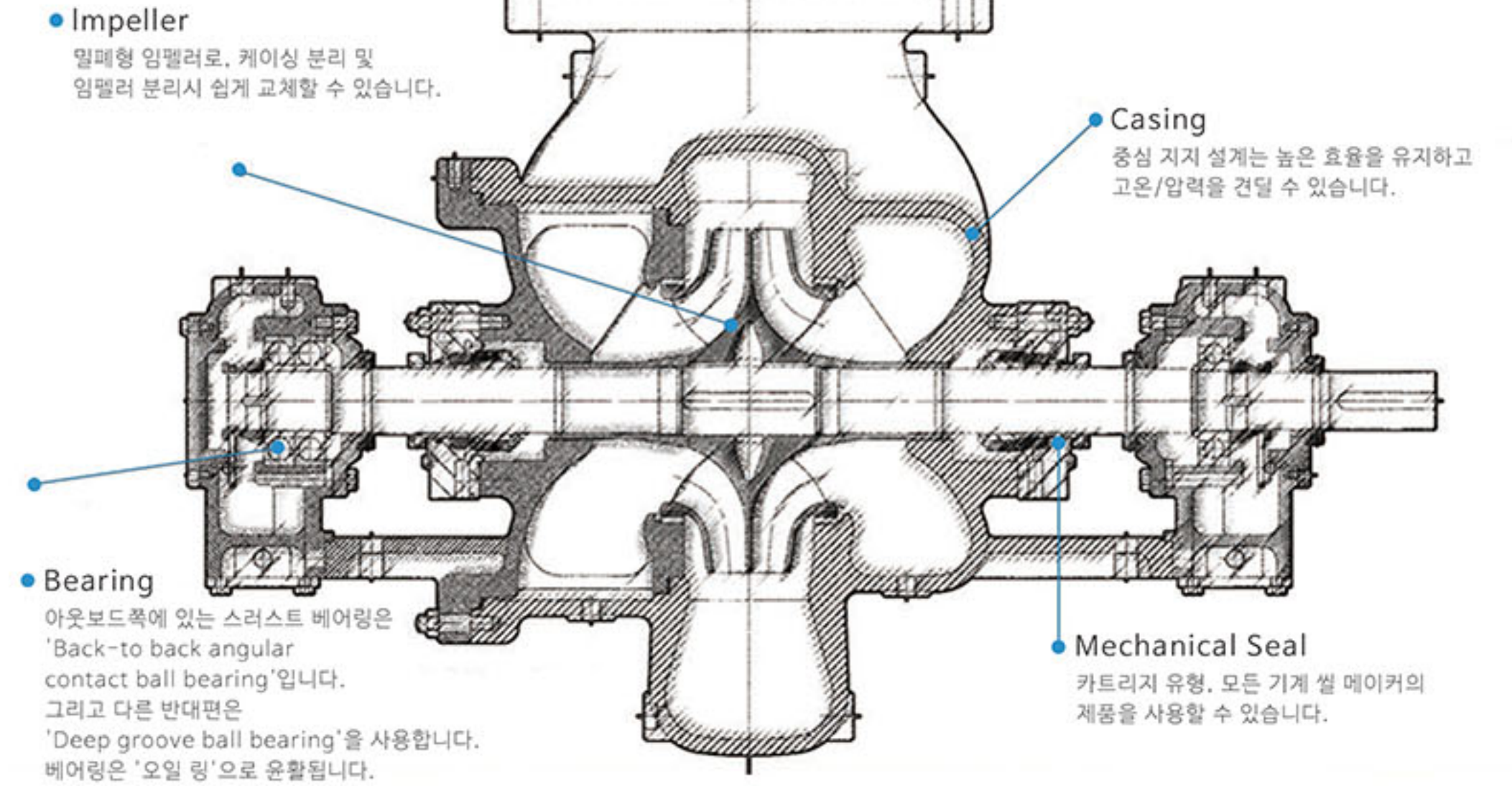
Capacity	Up to 100 m <sup>3</sup> /min (26,417 US GPM)
Head	Up to 550 m (1,804 ft)
Discharge Pressure	Up to 50 kgf/cm <sup>2</sup> G (711 PSIG)
Allowable Suction Pressure	Up to 40 kgf/cm <sup>2</sup> G (568 PSIG)
Impeller type	Enclosed
Temperature	-100°C ~ 460°C (-148°F ~ 860°F)
Flanges	ANSI, other standards also available
Location	Top Suction : Top Discharge
Seals	Conventional Packing or Mechanical Seal and Throttle bushing
Materials	According to API 610 Material code

\*API 610 최신 버전은 요청에 따라 적용할 수 있습니다.

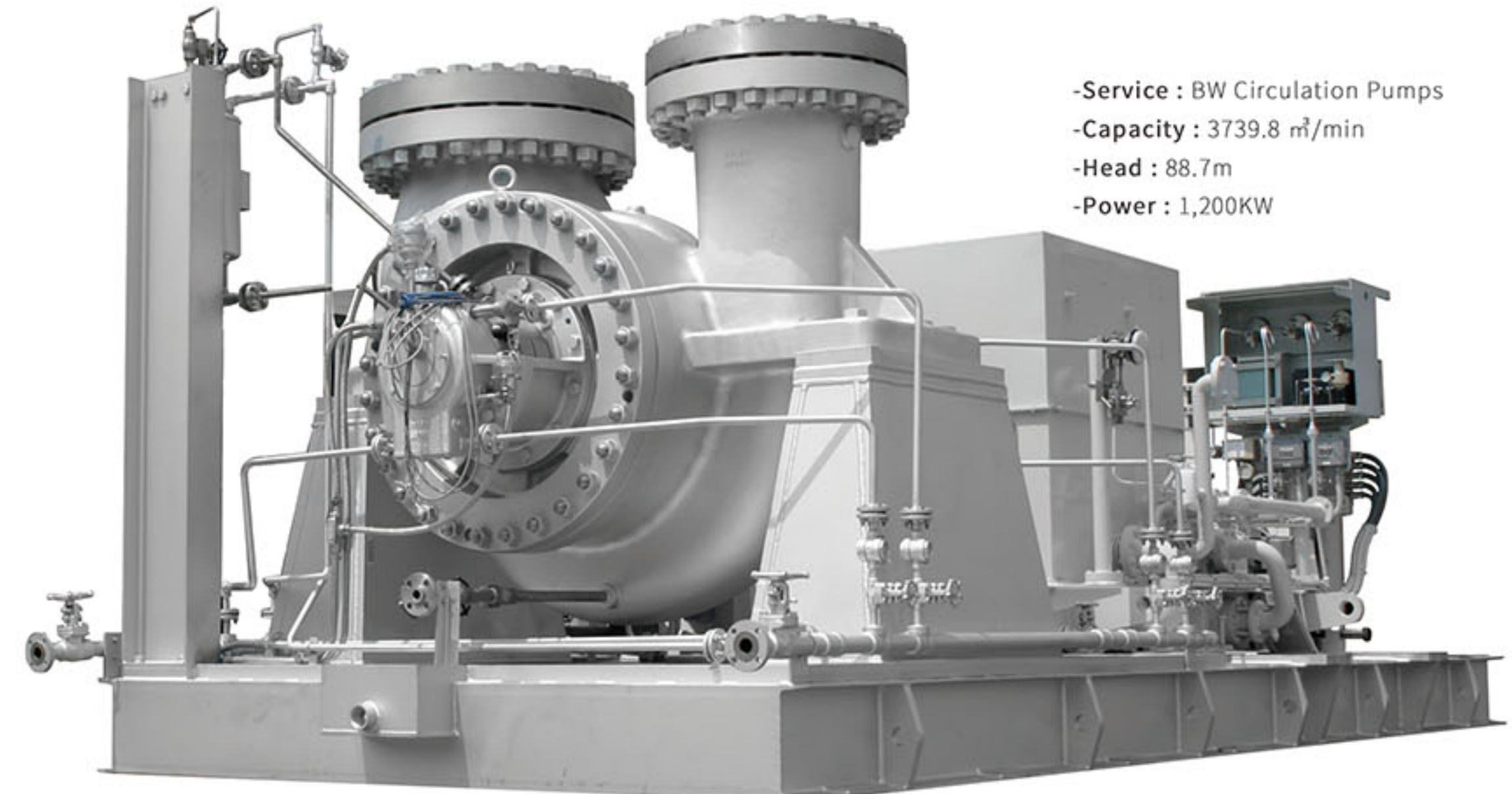


Detail

## ● 2D Model Drawing



## ● Photo Resources



- Service : BW Circulation Pumps
- Capacity : 3739.8 m<sup>3</sup>/min
- Head : 88.7m
- Power : 1,200KW

API610 Pumps for power plants