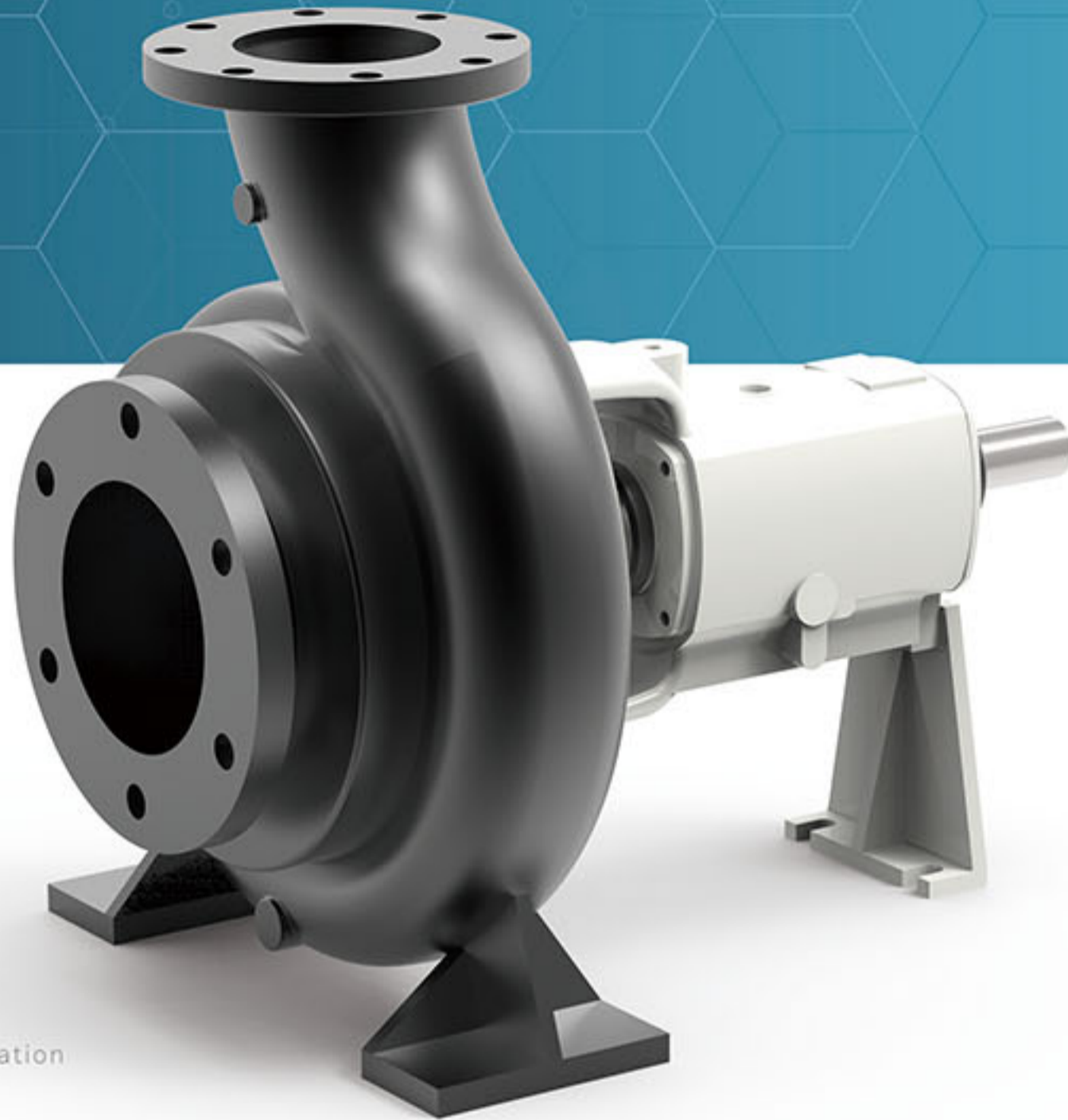


Paper Stock Process Pumps



# NOP



### Applications

- 화학공업용 Chemical industry
- 식품산업용 Food industry
- 제지공업용 Paper industry
- 산업폐수용 Industries waste water

### Feature

- 막힘이 없음  
Non-clog
- 넓은 범위의 완전한 표준화  
Completely standardization for wide application
- 백 풀 아웃 디자인 및 뒤로 뽑는 설계  
Foot support and back pull-out design
- 신뢰성 높은 견고한 구조  
Heavy and sturdy construction
- ISO 규격에 준수  
Compliance with ISO 2858.
- 최대의 호환성  
High Interchangeability
- 최대의 효율  
Good efficiency
- 낮은 필요 흡입양정  
Low NPSHr.

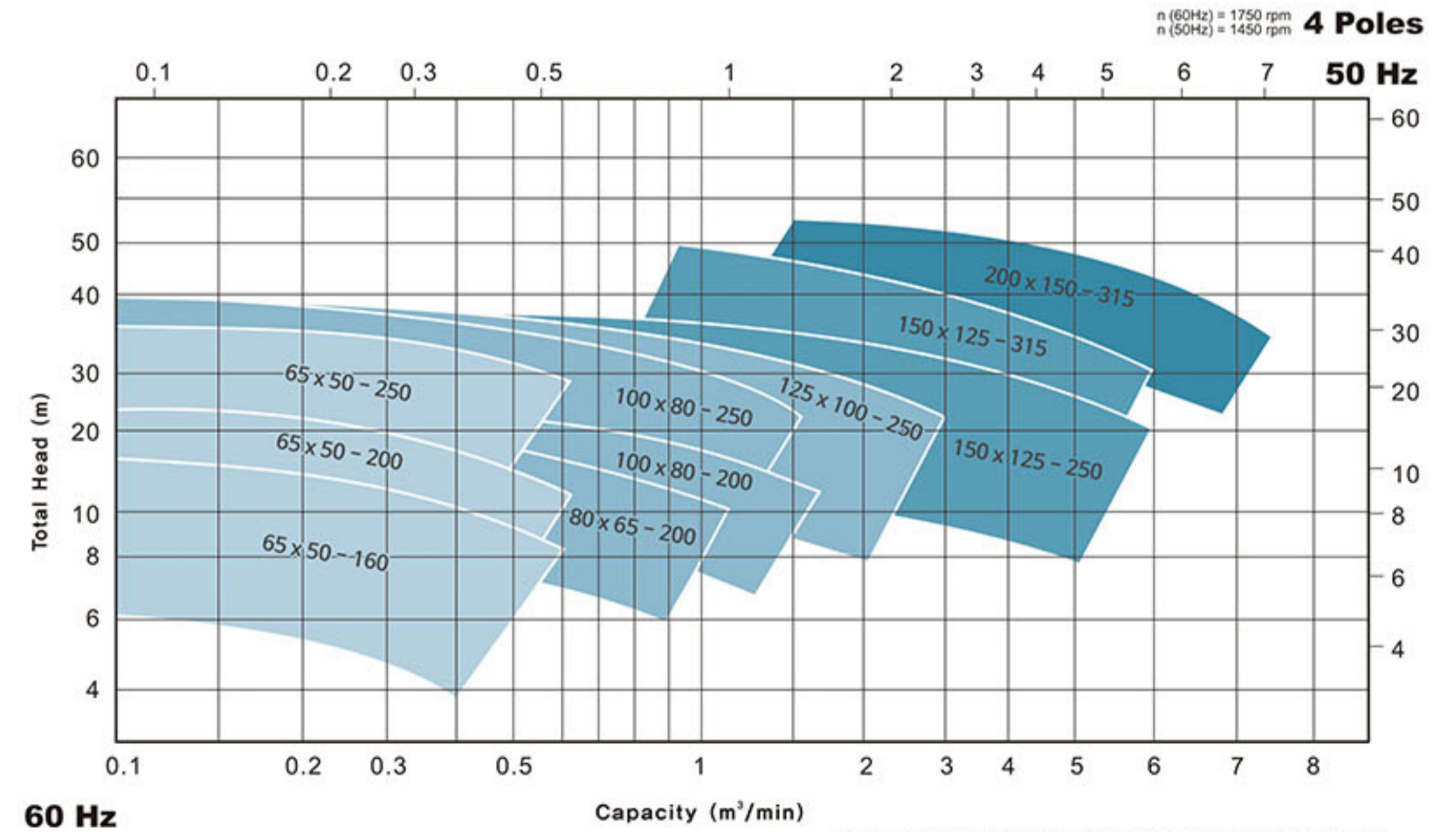
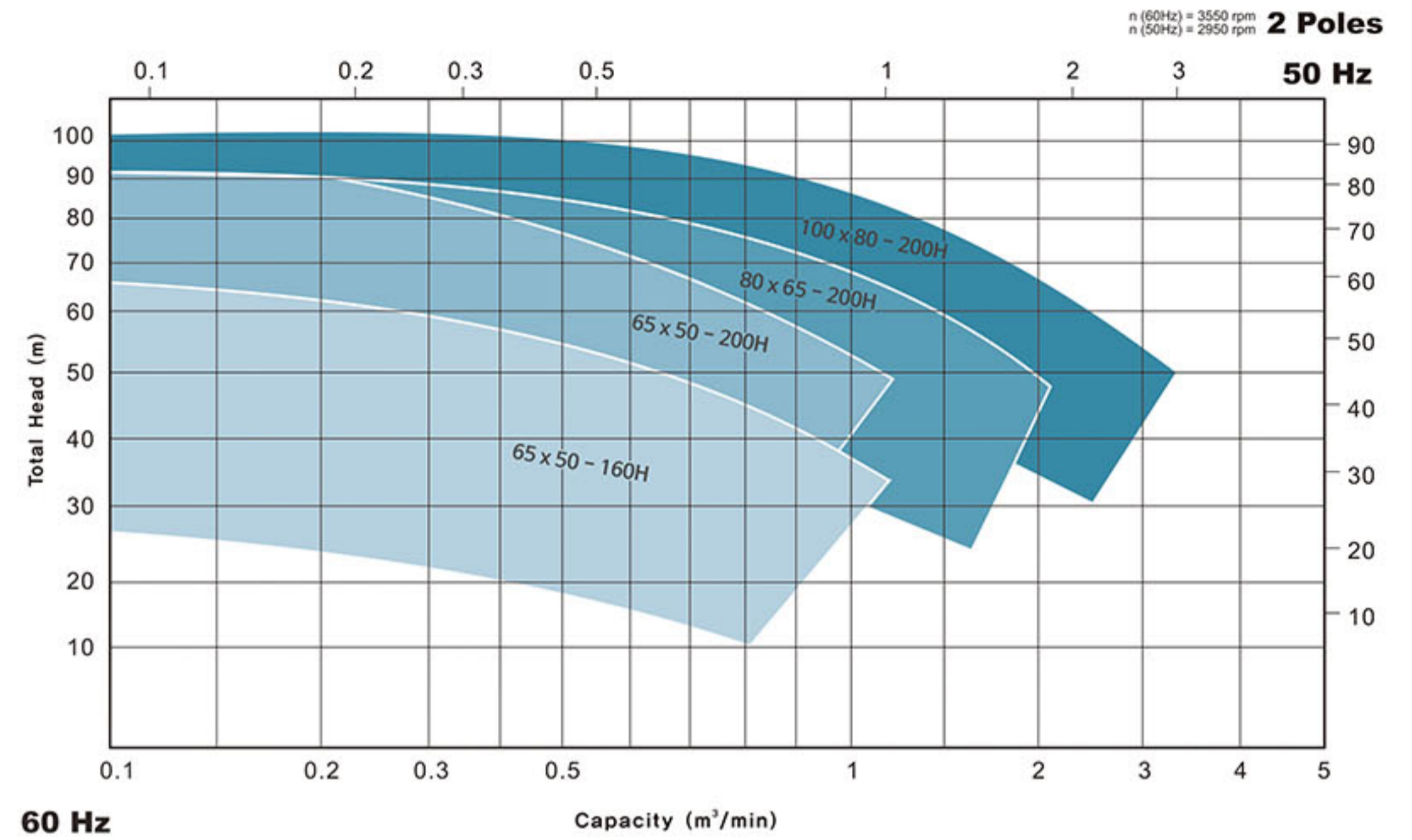
### Ratings

Capacity	Up to 7.5m <sup>3</sup> /min (1,981 US GPM)
Head	Up to 100m (328ft)
Discharge Pressure	Up to 12 kgf/cm <sup>2</sup> (170 PSIG)
Allowable Suction Pressure	Up to 7 kgf/cm <sup>2</sup> (99 PSIG)
Revolution 60Hz (50Hz)	1750 or 3550 min <sup>-1</sup> (1450 or 2950min <sup>-1</sup> )
Rotation	Clockwise viewed from coupling end
Temperature Stainless Steel	-50°C~177°C (-58°F~350°F)
Temperature Cast Iron	-20°C~150°C (-4°F~302°F)
Nozzle Rating	KS 10 kgf/cm <sup>2</sup>
Nozzle Facing	Steel : RF, Iron : FF
Nozzle Location	End Suction : Top Discharge
Seals	Conventional Packing or Mechanical Seal

### Pulp & Paper

- 6%를 유지하는 페이퍼스톡  
Paper stock thru 6% consistency
- 흑액 68%의 고형분  
Black liquor to 68% solids
- Hydropulper 및 파손 서비스  
Hydropulper and broke service
- 낮은 NPSH로 순환하는 소화조  
Low NPSH digester circulation
- 블로 탱크 스크린  
Blow tank to screens
- 기본 화면 거부  
Primary screens rejects
- 높은 밀도의 염소 처리용 타워  
High-density chlorine tower to washer

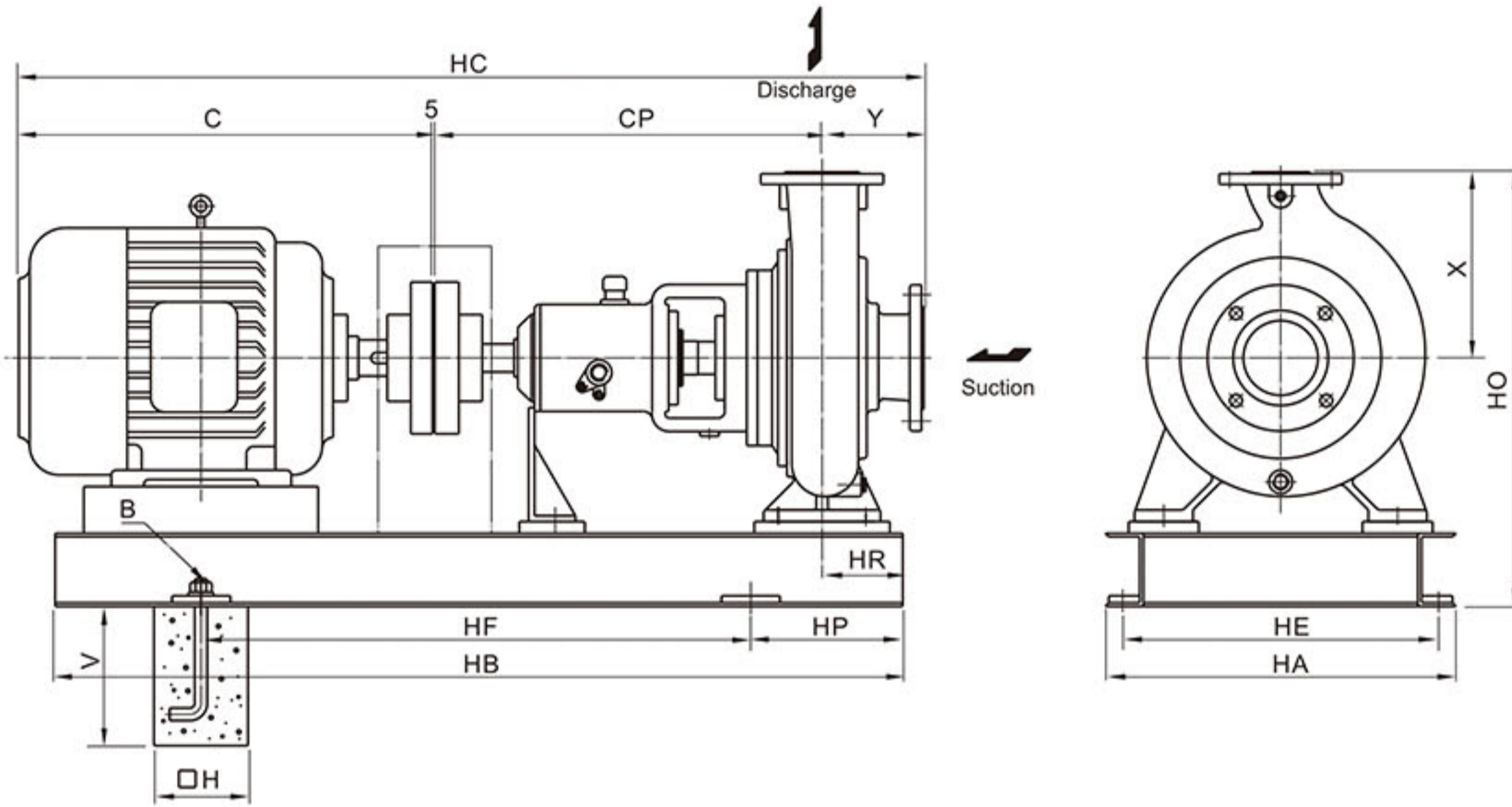
### Selection Charts



참고: \* 이 차트에 표시된 성능 범위는 실제 성능과 차이날 수 있습니다.

### Model. NOP

#### ● Installation Dimension

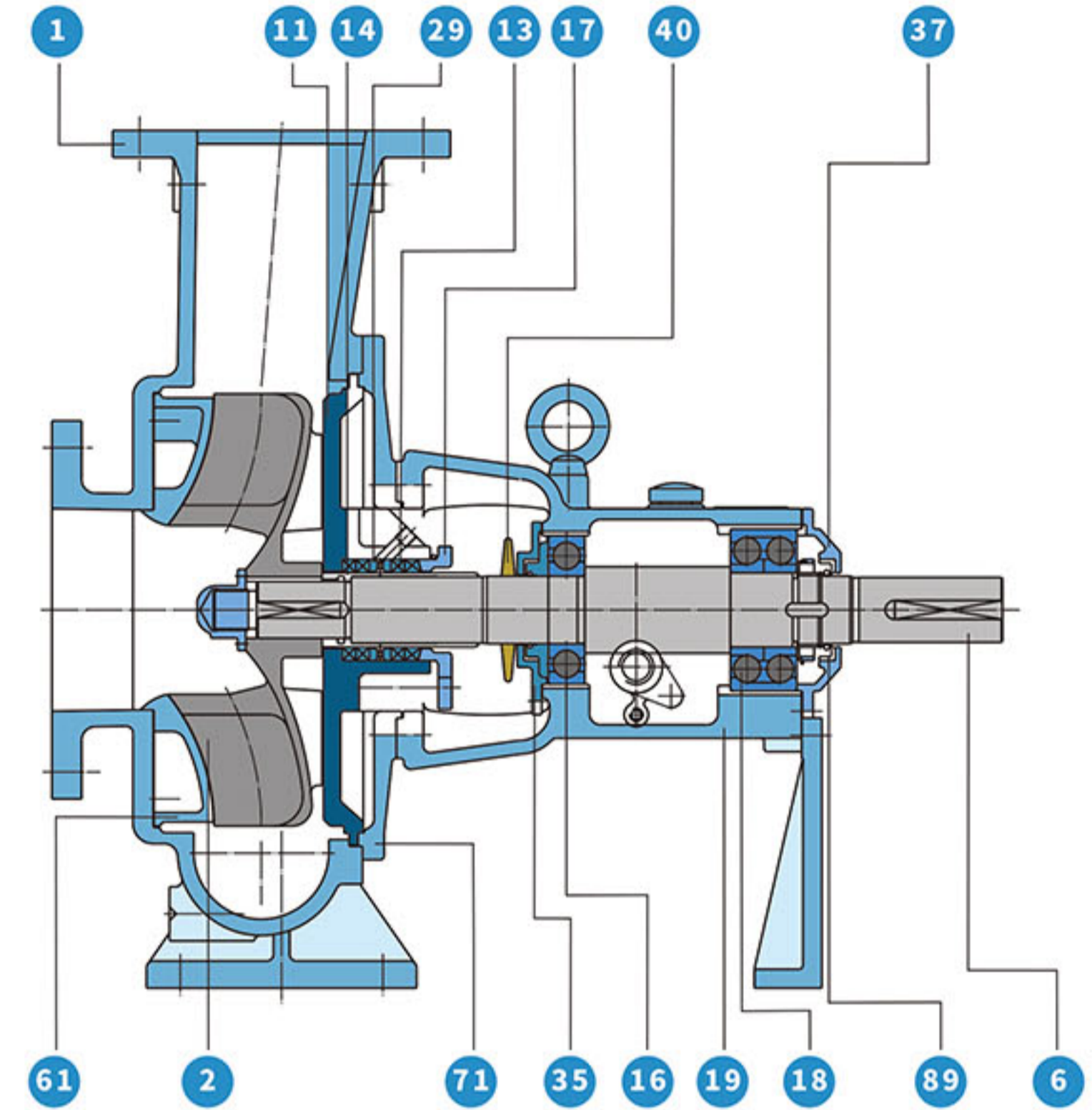


구분 규격	Pump and Motor									Baseplate						Anchor Bolt			
	Suc	Dis	Frame	kW	HC	C	CP	Y	X	HP	HR	HB	HF	HO	HE	HA	B	H	V
65×50-160	65	50	90L	1.5	817	328	385	100	132	115	80	710	480	354	290	320	4-M16×300L	150	300
65×50-200	65	50	112M	3.7	1011	382	500	125	160	150	80	900	600	410	350	380	4-M20×250L	200	250
80×65-200	80	65	132S	5.5	1088	444	500	140	160	170	80	1000	660	410	400	430	4-M20×250L	200	250
100×80-200	100	80	132M	7.5	1126	482	500	1740	180	170	95	1000	660	450	400	430	4-M20×250L	200	250
125×100-250	125	100	180M	19	1311	647	500	160	225	205	110	1250	840	570	490	530	4-M20×250L	200	250
150×125-315	150	125	180L	22	1369	685	530	180	250	205	110	1250	840	620	490	530	4-M20×250L	200	250
150×125-315	150	125	225S	45	1521	817	530	170	280	230	110	1400	940	705	550	600	4-M20×250L	200	250
200×150-315	200	150	250M	75	1768	894	670	200	315	270	130	1600	1060	800	670	730	4-M20×250L	200	250

참고: \*. 단위: mm / 이 카탈로그의 내용은 예고없이 변경 될 수 있습니다.

### Model. NOP

#### ● Parts List and Materials



No	Name of part	Material	
1	Casing	GCD450	SSC13
2	Impeller	SSC13	SSC13
6	Shaft	SM45C	STS304
11	Stuffing Box Cover	SSC13	SSC13
13	Packing	TEFLON	TEFLON
14	Packing Sleeve	STS304	STS304
16	Inboard Bearing	STEEL	STEEL
17	Packing Gland	GC200	SSC13
18	Outboard Bearing	STEEL	STEEL
19	Frame	GC200	GC200
29	Lantern Ring	BC6	SSC13
35	Inboard Bearing Cover	GC200	GC200
37	Outboard Bearing Cover	GC200	GC200
40	Deflector	NBR	NBR
61	Front Plate	SSC13	SSC13
71	Adapter	GC200	GC200
89	Oil Seal	NBR	NBR

참고: \*. 이외의 기타 자료는 요청시 제공됩니다.