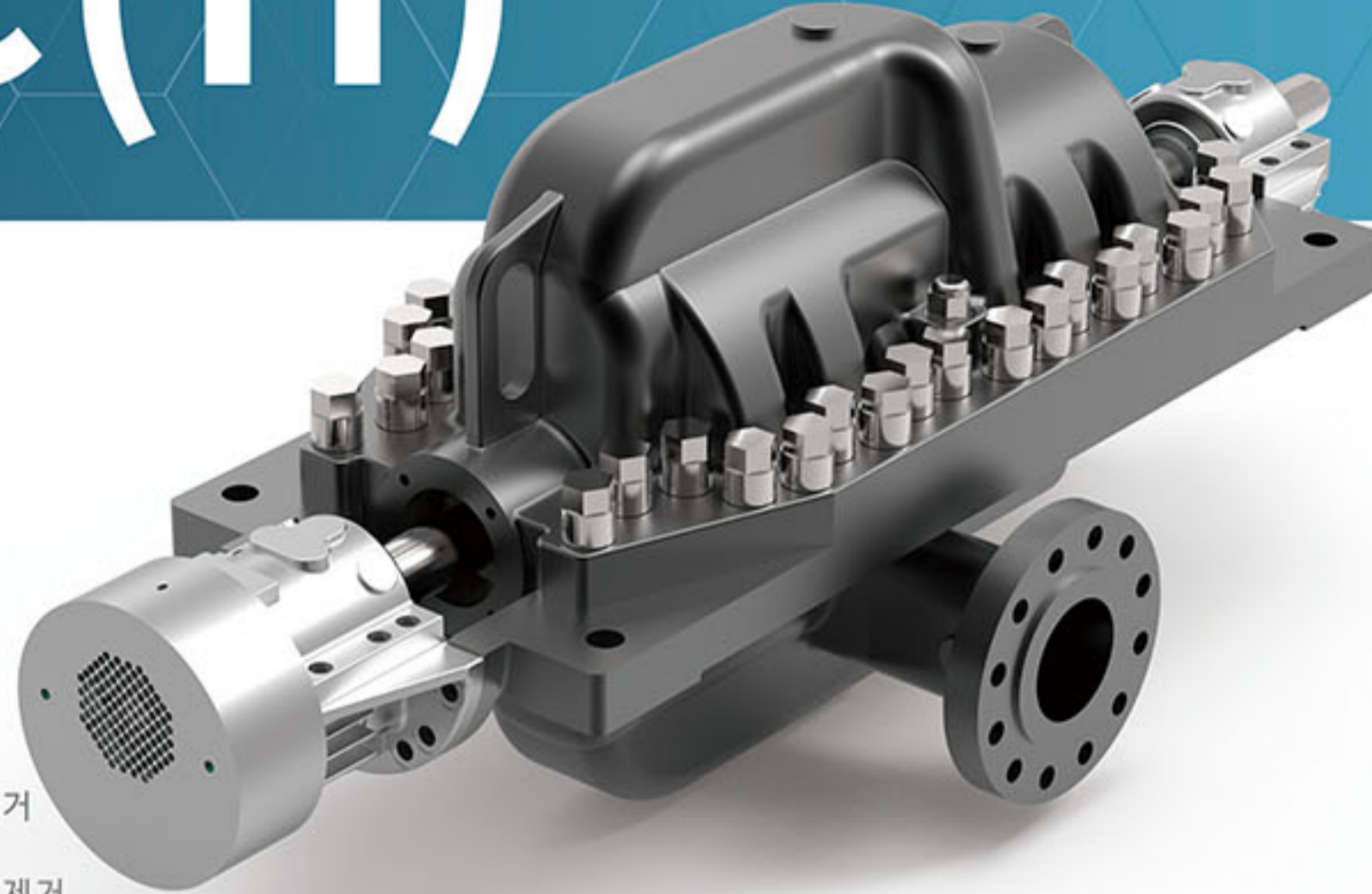


Axial Split Multi-stage Pumps



SMC(H)



Applications

- 보일러 급수용 Boiler feed
- 파이프라인 부스터 Pipeline booster
- 광산용 Mine pumping
- 고압용 High pressure process

Feature

- 이중 볼류트로 반경방향 축추력 제거
Double volute for radial balance
- 임펠러 대칭배열로 축방향 축추력 제거
Opposed impeller for axial balance
- 각 임펠러는 정밀한 동 밸런싱
Impeller each impeller statically and dynamic balanced
- 글랜드 패킹이나 기계적 시일 장착을 위한 최대 호환성을 갖는 카트리지 타입의 Stuffing box
Stuffing boxes cartridge type to provide maximum packed box or mechanical seal flexibility
- API standard 610 적용 (API Code : BB3)
API standard 610 (API Code : BB3)

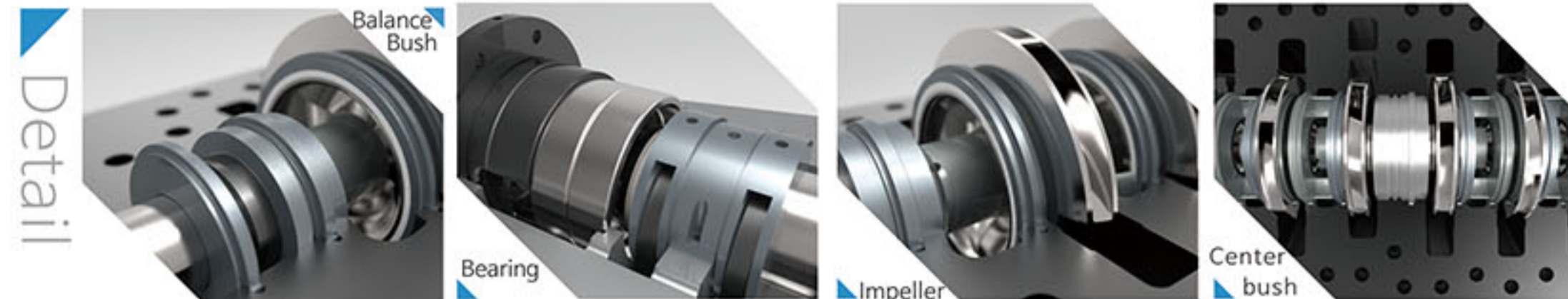
Ratings

Capacity	Up to 30 m ³ /min (7,925 US GPM)
Head	Up to 1,500 m (4,920 ft)
Discharge Pressure	Up to 150 kgf/cm ² G (2,133 PSIG)
Hydrostatic test Pressure	Up to 225 kgf/cm ² G (3,200 PSIG)
Max. allowable Speed	Up to 3,600 min ⁻¹
Temperature	~200°C (~ 392°F)
Flanges	-ANSI to 2500 lb (other standards also available)
Location	Side Suction : Side Discharge
Seals	Conventional Packing or Mechanical Seal Floating Seal & Throttle Bushing
Materials	According to API610 Material code

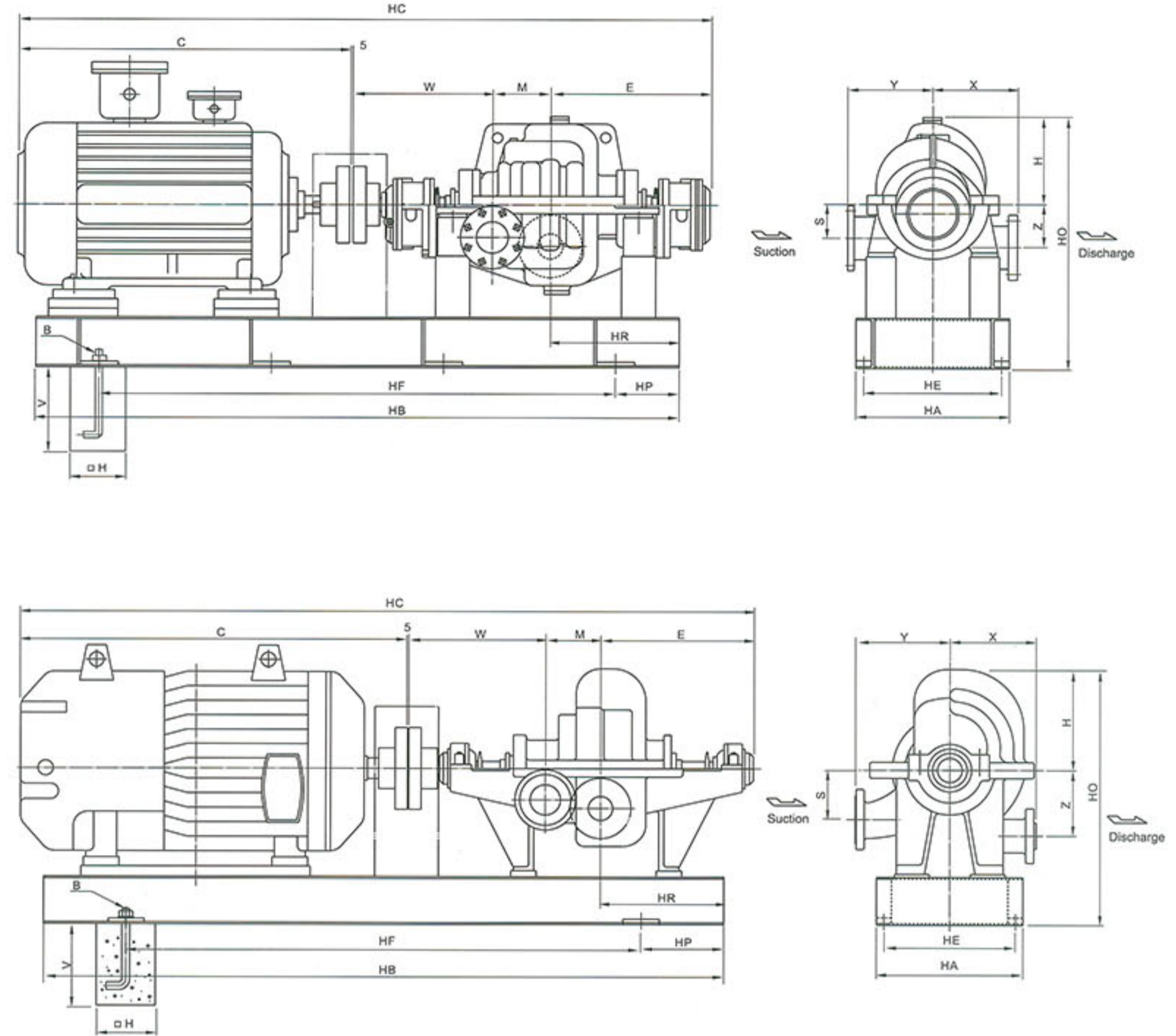
규격	Size	Stage	Capacity (m ³ /min)	Head (m)	Power (kW)	Revolution (rpm)
6540 4-2	65x40	4	0.6	200	45	3500
8050 2-2	80x50	2	0.85	220	75	3500
8050 4-2	80x50	4	0.9	280	75	3500
8050 6-2	80x50	6	0.9	420	132	3500
1080 2-2	100x80	2	1.5	220	95	3500
1210 4-2	125x100	2	1.5	450	95	3500
1512 2-4	150x125	2	3	100	95	1750
1512 4-4	150x125	4	3	240	220	1750
1512 5-4	150x125	5	3	300	250	1750
2015 2-4	200x150	2	4	150	190	1750
2015 4-4	200x150	4	5.6	280	300	1750
2015 6-4	200x150	6	5.6	420	450	1750
2520 4-4	200x150	4	7.5	200	370	1750

*API 610 최신 버전은 요청에 따라 적용할 수 있습니다.

SMC(H) : 2Poles (High speed)



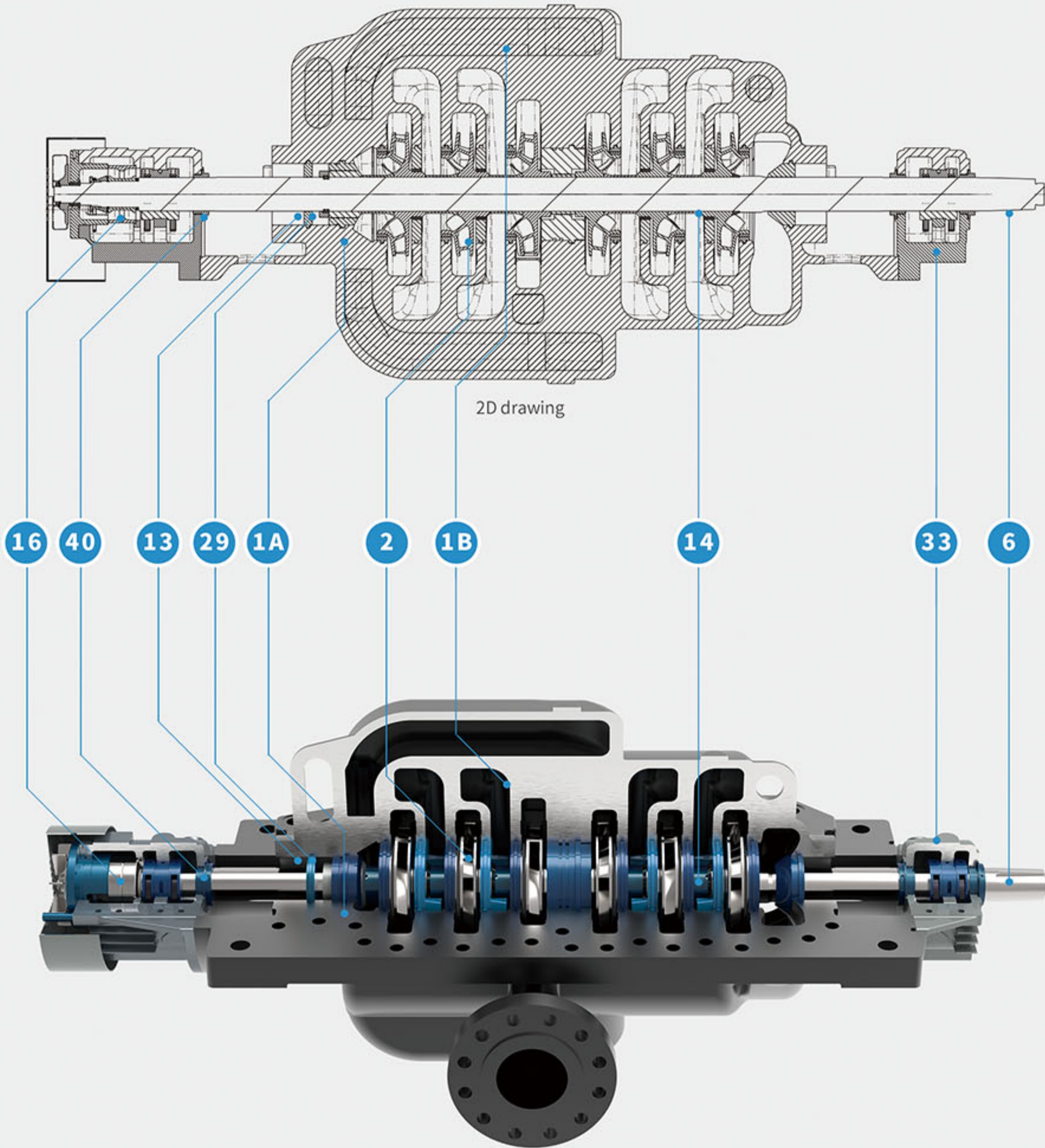
Installation Dimension



구분	Pump and Motor											Baseplate						Anchor Bolt				
	Frame	kW	BC	C	W	M	E	X	Y	S	H	Z	HP	HR	HB	HF	HO	HE	HA	B	H	V
65404	225S	45	1872	817	395	190	465	200	235	110	230	125	270	365	1600	1060	435	440	480	4-M20x315L	180	315
80502	250M	75	1689	894	390	95	305	220	220	115	230	155	255	260	1500	990	430	490	530	4-M20x315L	180	315
80504	250M	75	2054	894	450	225	480	240	240	125	285	125	325	450	1900	1250	425	550	610	4-M24x315L	180	315
80506	280L	132	2464	1154	450	300	555	250	250	125	285	125	360	520	2240	760x2	505	550	610	6-M24x400L	230	400
12104	280LL	190	2419	1281	550	225	625	290	320	130	315	165	360	460	2360	820x2	565	550	610	6-M24x400L	230	400
15122	280S	95	2359	1014	600	190	550	400	375	200	460	250	360	540	2120	700	700	550	610	6-M24x400L	230	400
15124	5809S	220	3510	1590	685	350	880	400	400	200	460	250	370	850	3350	870x3	750	750	810	8-M24x400L	230	400
15125	5809S	250	3660	1590	685	500	880	400	400	225	455	260	370	850	3350	870x3	750	830	900	8-M24x400L	230	400
20152	280LL	190	2581	1281	490	275	530	500	500	280	510	225	360	530	2650	965x2	700	550	610	8-M24x400L	230	400
20154	5810S	300	3842	1692	780	420	945	450	450	200	485	275	360	980	3750	1010x3	1335	830	990	8-M24x400L	230	400
20156	6810S	450	4531	2021	780	600	1125	450	450	200	485	275	355	1100	4250	1180x3	1335	830	990	8-M24x400L	230	400
25204	6809S	370	3758	1893	630	390	840	450	450	250	695	280	365	850	3500	940x3	800	1050	1110	8-M24x400L	230	400

Model. SMC(H)

● Parts List and Materials



2D drawing

3D drawing

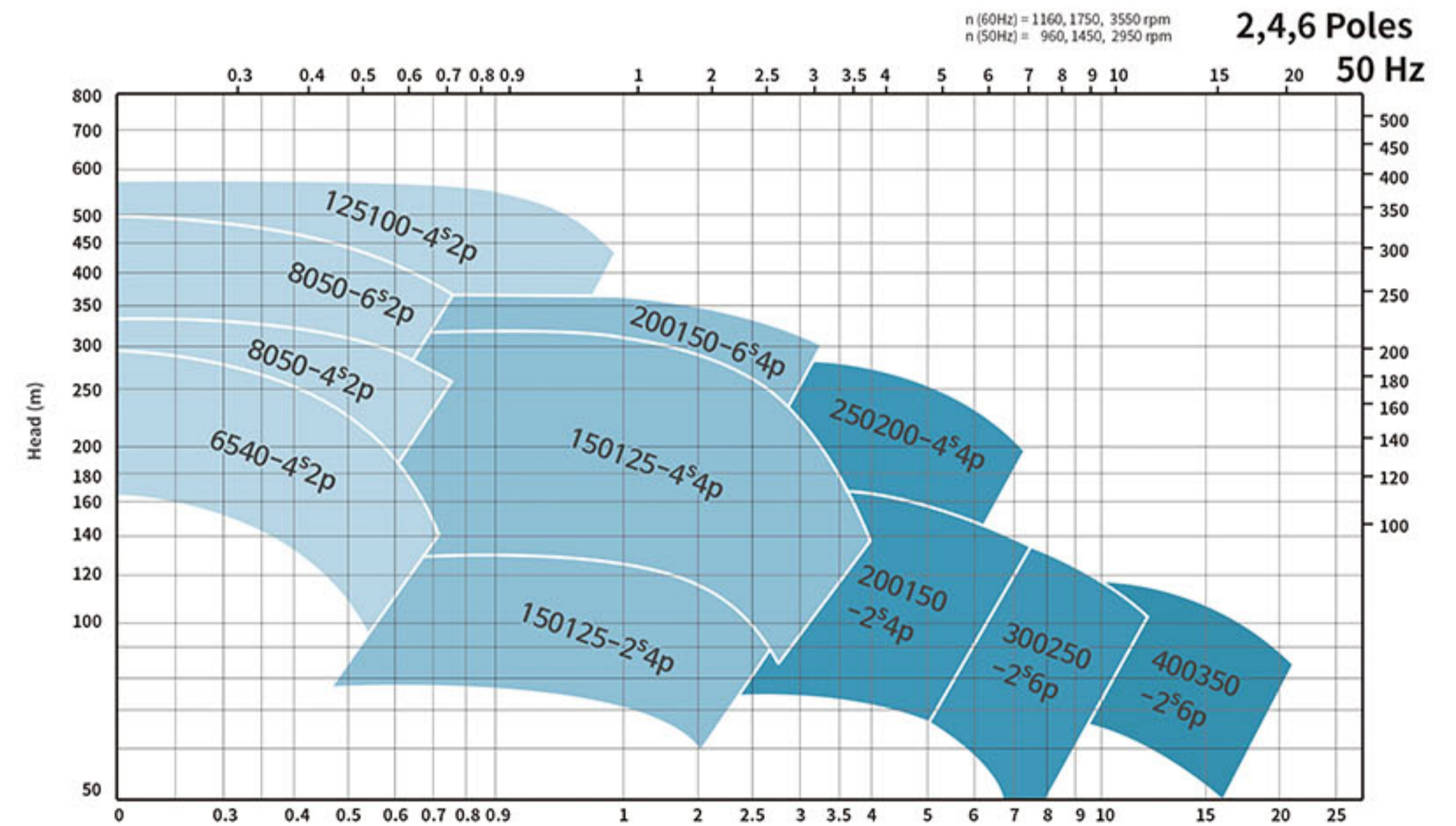
Model. SMC(H)

● Parts List and Materials

No	Name of part	Material	
1A	Lower Casing	GCD450	SSC13
1B	Upper Casing	GCD450	SSC13
2	Impeller	BC6	SSC13
6	Shaft	SM45C	STS410
13	Packing	TEFLON	TEFLON
14	Sleeve	BC6	STS304
16	Inboard Bearing	STEEL	STEEL
17	Packing Gland	GC200	SSC13
18	Outboard Bearing	STEEL	STEEL
29	Lantern Ring	BC6	SSC13
33	Bearing Housing	GC200	GC200
35	In Bearing Cover	GC200	GC200
37	Out Bearing Cover	GC200	GC200
40	Deflector	NBR	NBR
83	Stuffing Box	GCD450	SSC13

참고: * 이외의 기타 자료는 요청시 제공됩니다.

● Selection Charts



60 Hz

Capacity (m³/min) 참고: * 이 차트에 표시된 성능 범위는 실제 성능과 차이날 수 있습니다.