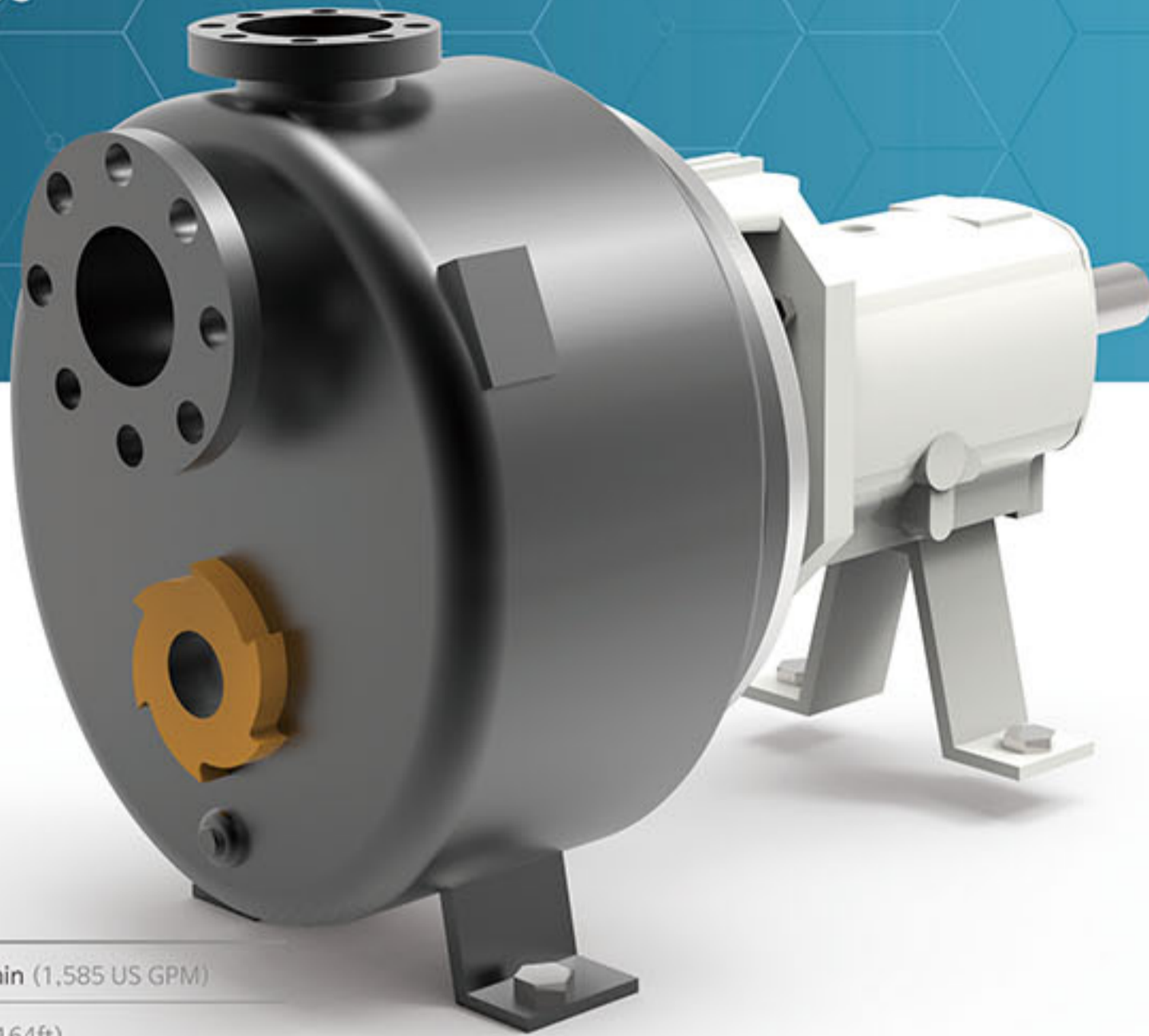


ANSI Self Priming Pumps

SSP



● Applications

- 프로세스용 Process
- 배수용 Sump drainage
- 화학용 Chemical industry
- 기타공업용 Other Various industries

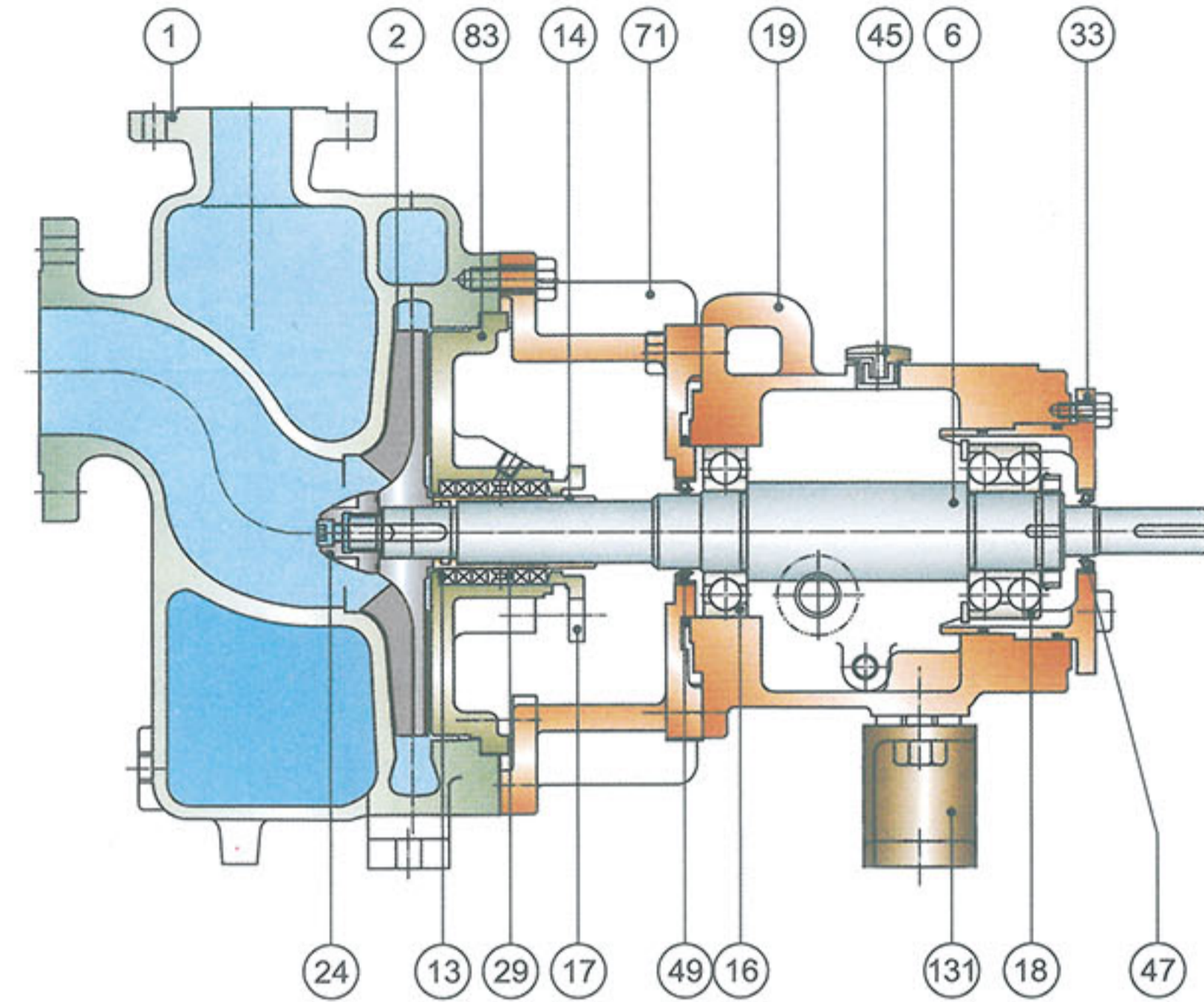
● Ratings

Capacity	UP to 6m ³ /min (1,585 US GPM)
Head	UP to 50m (164ft)
Temperature	UP to 177°C (350°F)

● Technical Data

Bearing size/Rec. Fit-up	Inboard: MRC (SKF) 310 S/LO (6310/C3) Outboard: MRC (SKF) 5310(CG/LO)(5310 NR/Std.)
Shaft end play Maximum	0.001"(0.03mm)
Corrosion allowance	1/8"(3mm)
Casing flange	Class 150 raised face is available
Horizontal seal ring radial clearance	0.015~0.025"(0.38~0.64mm)
Impeller setting (Cover plate to impeller)	0.018"min. (0.46mm)
Minimum liquid temperature	-20°F (-29°C) (2)
Maximum liquid temperature without cooling	350°F (117°C)
Maximum liquid temperature with cooling	500°F (260°C) (1)
Maximum allowable horsepower (at 1150 RPM)	50hp (37kW)
Maximum allowable horsepower (at 1750 RPM)	75hp (55kW)
Maximum allowable horsepower (at 3500 RPM)	150hp (110kW)
Maximum RMS finish of shaft at stuffing box	16"(0.4m)

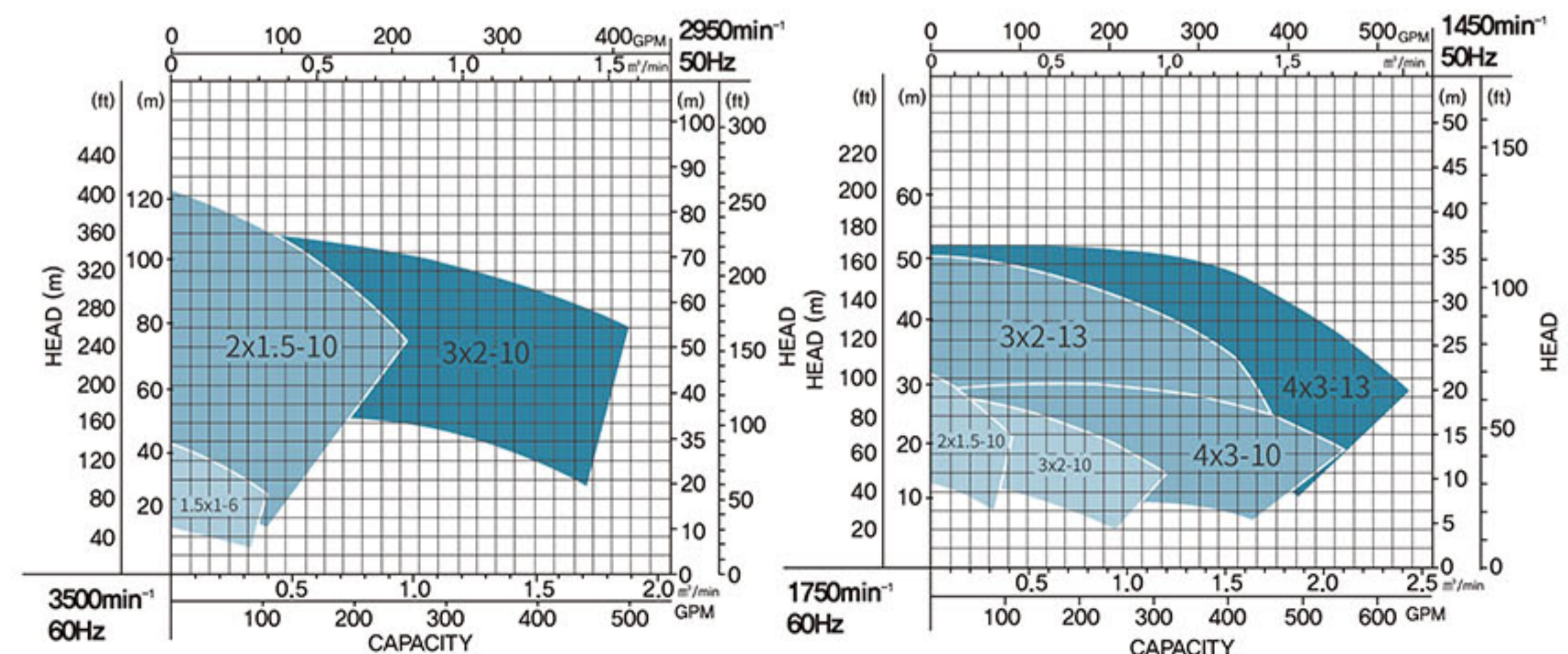
● Parts List and Materials



- | | | |
|--------------------|---------------------------|------------------------------------|
| 1 Casing | 17 Packing Gland | 45 Oil Cap (Leakage free air vent) |
| 2 Impeller | 18 Outboard Bearing | 47 Oil Seal |
| 6 Shaft | 19 Frame | 49 Oil Seal |
| 13 Packing | 24 Impeller Nut | 71 Adapter |
| 14 Sleeve | 29 Lantern Ring | 83 Stuffing Box |
| 16 Inboard Bearing | 33 Outboard Bearing Cover | 131 Supporter |

참고: *. 이외의 기타 자료는 요청시 제공됩니다.

● Selection Charts



참고: *. 이 차트에 표시된 성능 범위는 실제 성능과 차이날 수 있습니다.